

UNOBAT 62+

Batten system for even/uneven subfloors
Construction height from 62-209mm


JUNCKERS
Performing on Danish design

JUNCKERS.COM



UNOBAT 62+

The Unobat 62+ System provides excellent performance and safety, along with the ability to accommodate all types of irregular subfloors. The 22 mm solid hardwood floorboards are fastened to a subfloor system consisting of single layer engineered battens with pre-attached shock absorbing rubber pads.

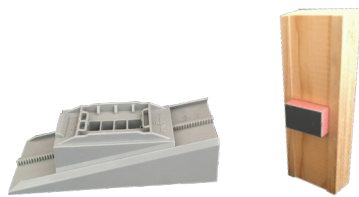
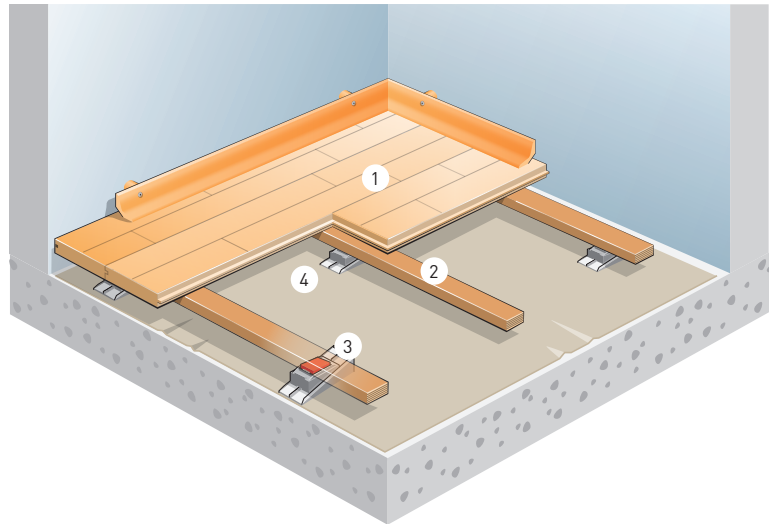
The pre-attached rubber pads snap-lock into either a J-lock cradle, or if the floor needs to be levelled, a J-Lock adjustable wedge. The J-Lock cradle serves as a durable stop block for flat subfloors.

The J-Lock adjustable wedge allows for the quick correction of uneven subfloors into flat, ideal playing surfaces. Levelling the floor is conducted without use of nails and tools.

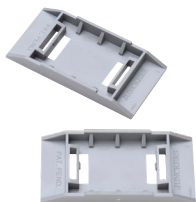
Packing bases fitting the adjustable J-lock Wedge are available in a variety of thicknesses to easily increase the height of the floor system as needed.

SYSTEM COMPONENTS

1. 22 x 129 x 3700 mm floorboards
2. Batten: 25.5 x 60 x 3600 mm with pre-attached shock pads
3. Adjustable J-LockWedge
4. 0.2 mm SylvaThene moisture barrier
5. Combi sports skirting



Junckers' patented adjustable and locking J-Lock Wedge and batten with pre-attached shock pad.



Junckers' patented J-Lock cradle. For use on flat subfloors.

FACTS

Construction height using the J-Lock cradle for flat sub floors	62 mm
Construction height using the adjustable J-Lock wedge and supporting blocks	From 82 mm to 209 mm
Required subfloor	Flat/uneven
Performance	Area-elastic according to EN 14904 class A4
Floorboard type	Prefinished 22 mm 2-strip solid hardwood
Subconstruction	Single layer batten system
Batten Centre C/C	Choice between 336 mm or 411 mm
Junckers' 25 years fatigue test	✓
Sanding and re-sealing	Yes, to bare wood 8-10 times
Suitable for underfloor heating	Yes

	Requirements EN 14904:A4	Batten distance c/c 411 mm	Batten distance c/c 336 mm
Shock absorption	≥ 55 < 75 %	67 %	65 %
Vertical deformation	≥ 2.3 < 5.0 mm	3.0 mm	2.6 mm
Ball bounce	≥ 90 %	93 %	94 %
Friction	≥ 80 ≤ 110	~ 85	~ 85
Rolling Load	≥ 1500 N	3000 N ¹	3500 N ¹
Point load	None	5500 N ~ 550 kgs ²	6000 N ~ 600 kgs ²

1) Junckers' test with solid rubber wheels: Width 50 mm, diameter 100 mm.
2) Junckers' test with 100x100 mm point load.